



Q&A SR-91/SR-71 INTERCHANGE PROJECT

A project of the Riverside County Transportation Commission

WHAT IS THE SR-91/SR-71 INTERCHANGE IMPROVEMENT PROJECT?



Improving mobility on State Route 91 is one of the top priorities of the Riverside County Transportation Commission (RCTC). The connection between State Route 91 and State Route 71 in and near the City of Corona is critical to reduced traffic congestion in this area. RCTC is proposing a set of improvements to the State Route 91/State Route 71 (SR-91/SR-71) interchange, which provides a vital link between the counties of Riverside, Orange and San Bernardino.

The proposed interchange improvements will reduce daily traffic delays. Drivers currently experience about one hour of delay during peak travel times on this section of SR-91, partially due to congestion at this interchange. The project also will enhance driver safety, boost inter-county connections, support the movement of goods, and facilitate mobility throughout Southern California.

The total cost of the improvements is estimated to be \$100 million.

The SR-91/SR-71 interchange falls within one of four freeway corridors that RCTC has selected to receive \$2 billion in funding during the next 10 years. These four corridors – SR-91, Interstate 10, Interstate 15, and Interstate 215 – will receive priority funding from Measure A, the half-cent sales tax for transportation

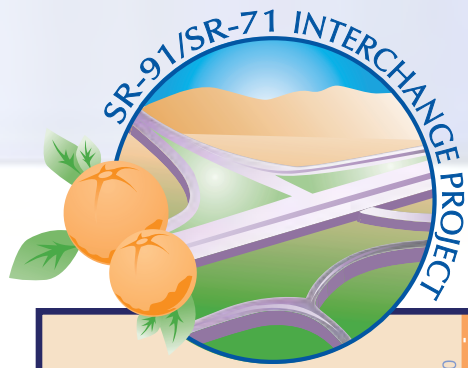
improvements in Riverside County. Schedules have been set to fund and deliver major transportation projects along these corridors during the coming decade.

Work is underway on the Project Report and Environmental Document phase of this interchange improvement effort. This phase of work is expected to continue until early 2011. Construction could start as early as 2013 and be complete by 2016.

WHO ARE THE PROJECT PARTNERS?

The Riverside County Transportation Commission has teamed with the following agencies to plan and deliver this project:

- The California Department of Transportation
- The County of Riverside
- The City of Corona



SR-91/SR-71 INTERCHANGE PROJECT



WHAT ARE THE PROJECT FEATURES?

Two main improvements are being developed for the SR-91/SR-71 interchange between Green River Road and Serfas Club Drive/Auto Center Drive in the Corona area. These improvements include:

- Building a proposed new two-lane direct flyover ramp between eastbound SR-91 and northbound SR-71 to replace the existing loop ramp
- Building a new separate eastbound road just south and parallel to SR-91 to provide improved access between the Green River Road interchange and the SR-91/SR-71 interchange

HOW WILL THIS PROJECT BENEFIT THIS CORRIDOR?

Commuters, residents and business operators will benefit from the SR-91/SR-71 interchange project, which is designed to:

- Improve travel times for commuters by reducing the current interchange bottleneck
- Increase the carrying capacity of the interchange and freeway lanes
- Minimize traffic conflicts at the interchange through improved vehicle merging
- Reduce traffic delays, travel time and traffic diversion in the local area
- Enhance commerce by moving goods, commuters and recreational travelers more effectively between Riverside and its neighboring counties
- Deliver improvements named in the RCTC Measure A Delivery Plan

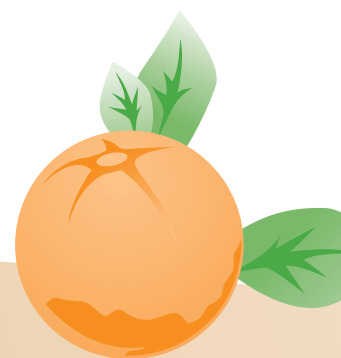
WHAT IS THE PROJECT SCHEDULE?

Transportation projects must complete a number of steps before they can be delivered. For the first step, the California Department of Transportation prepared an initial planning document – called a Project Study Report – in December 2006. Work is underway on the preliminary engineering and environmental studies, which will be used to develop

a Project Report and Environmental Document. This step may take up to three years to complete. If the project receives environmental approval, final engineering design and right-of-way acquisition should take about two years, followed by three years for construction. Please see table below for the estimated schedule.

SCHEDULE

2006	2008-2011	2011-2013	2013-2016
Complete Project Study Report	Complete Project Report and Environmental Document	Final Engineering Design and Right-of-Way Acquisition	Project Construction and Completion



WHAT STUDIES ARE NEEDED FOR THIS PROJECT?

RCTC and Caltrans are preparing a Project Report and an Environmental Document for the SR-91/SR-71 interchange project. These documents will summarize the results of the following studies:

- Current and future traffic
- Preliminary engineering design
- Possible effects on air, water, noise, utilities and sensitive plants and wildlife
- Potential impacts to area residents and businesses, parks and recreational areas, cultural and historic resources, and public services
- Consistency with city and county general plans and compliance with Riverside County's Multi-Species Habitat Conservation Plan
- Project cost estimates

These reports are necessary to meet requirements of the California Environmental Quality Act and to obtain state approvals. If state approvals are obtained, final engineering design, environmental permitting, and right-of-way acquisitions will be conducted. Once these activities are completed, construction can begin.



HOW CAN YOU BE PART OF THIS PROCESS?

Public participation is a very important part of the environmental approval process. To learn more or to comment on the proposed improvements, please:

- Watch for notices and attend public meetings about the project
- Ask to be placed on the project mailing list
- Visit the project website at www.SR91-SR71project.info
- Visit the District 8 website of the California Department of Transportation: www.caltrans8.info
- Call RCTC at (951) 787-7141
- Write to the Riverside County Transportation Commission, P.O. Box 12008, Riverside, CA 92502-2208

ADDRESS SERVICE REQUESTED

Riverside, CA 92502
P.O. Box 12008
Transportation Commission
Riverside County
INTERCHANGE PROJECT
SR-91/SR-71



PRSR
U S POSTAGE
PAID